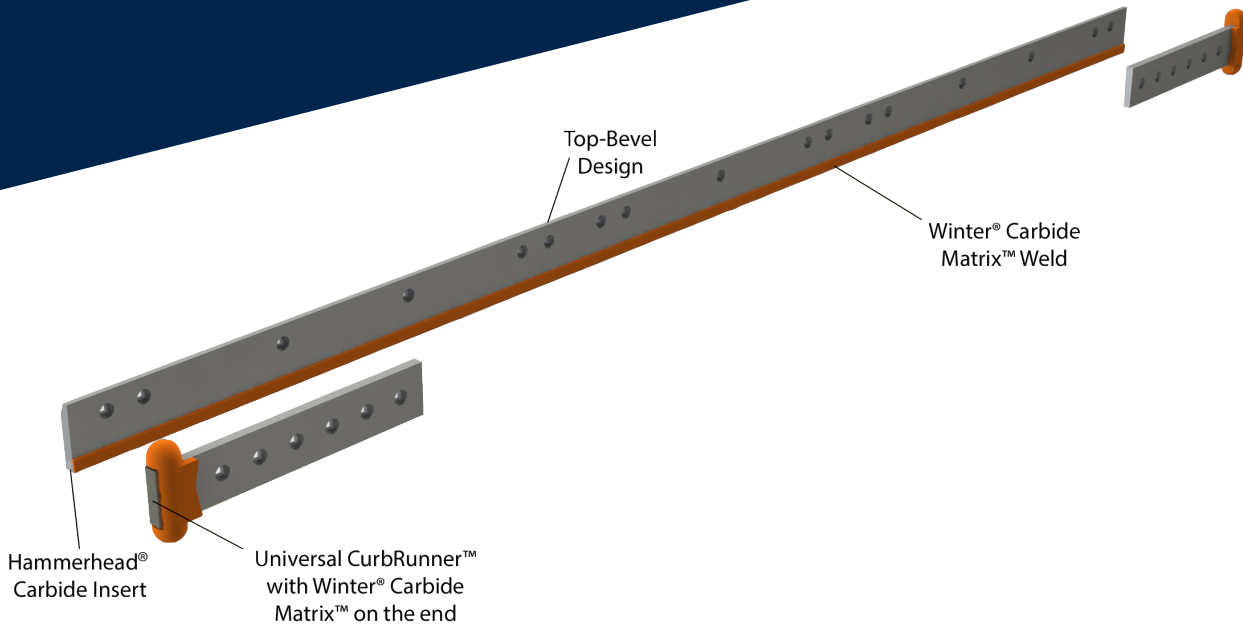


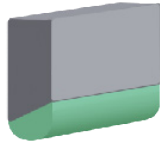
# Carbide Insert Blade System

# RoadMaxx®

The solution for your underbody plows



**29% MORE CARBIDE OVER  
STANDARD TRAPEZOID DESIGN**



## Features & Benefits

- **Increased Blade Life:** Bullnose HammerHead® carbide inserts provide additional wear life that performs with multiple attack angles..
- **High Wear Protection:** Winter® Carbide Matrix™ weld applied to the face of the blade reduces washout and premature wear, protecting your carbide investment.
- **Curb Protection:** Universal CurbRunners™ defend against premature blade wear.
- **The Perfect Fit:** Your choice of 5" or 6" beveled blades allows for appropriate selection based on your plow height.
- **Safe Installation:** Sectional blades replace dangerous full-length cutting edges.



800-294-6837

Visit [winterequipment.com/roadmaxx](http://winterequipment.com/roadmaxx)

### BEST USED



HIGHWAY



RURAL



CITY



PARKING LOTS



Free freight and arrives  
in an easy-to-inventory crate.

### One Part Number Includes:

- Three RoadMaxx® blade sections
- Two Universal CurbRunners™
  - Necessary Hardware
  - Installation Instructions